

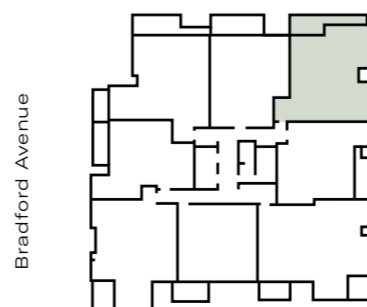
THE GROUNDS

OF KEW

RESIDENCE 103



^
N



Bradford Avenue

Cotham Road

Bedroom	3
Ensuite Bathroom	1
Bathroom	1
Powder Room	1
Living Room	1
Car Spaces	2
Internal area	129m ²
External area	17m ²
Total area	146m ²



1:50

Whilst we endeavour to ensure the contents of these plans are correct at the time of printing, the information they contain is to be used as a guide only. Furnishings and floor coverings are for illustrative purposes only, are not shown to scale nor included in the stated price unless expressly included. The columns shown may vary in diameter throughout the Building. All areas are provided in accordance with the Method of Measurement for Residential Property provided by the Property Council of Australia. The plans were completed prior to the completion of final design, engineering and construction of the Building, therefore design, engineering, dimensions, fittings, finishes and specifications are subject to change without notice in accordance with the provisions of the Contract of Sale.