



Live Beyond Incredible

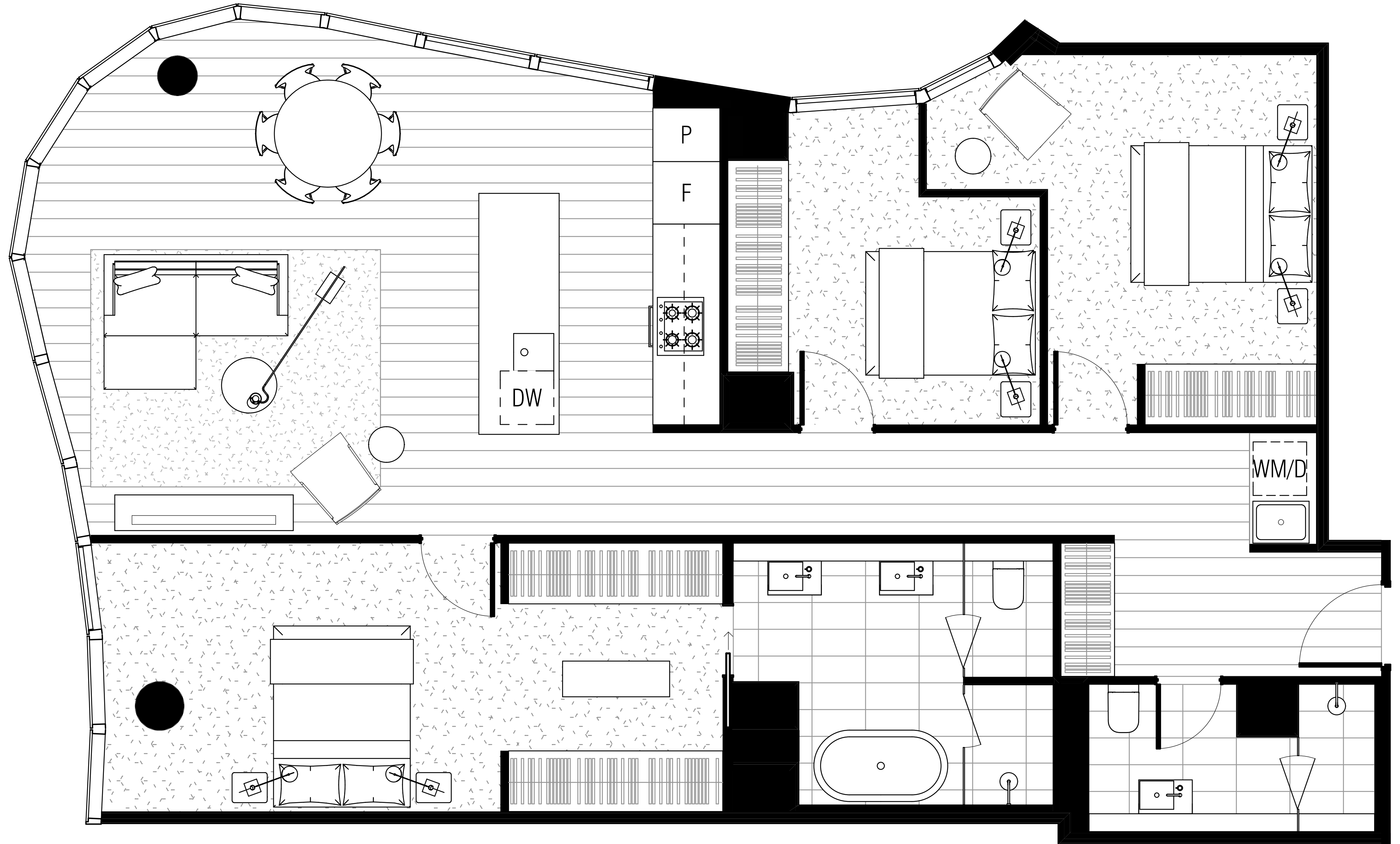
A three-bed, two-bathroom apartment with full-length glazing in every room, it is a home to be enjoyed in style. The beautiful kitchen and island bench embrace the clouds, with views to Port Phillip Bay. The master bedroom boasts a walk-in robe for your prized designer collections, leading to a large ensuite with dual sinks and a standalone bath.

The epitome of grandeur and exquisite living, each Cloud Residence is crafted to perfection. Indulging all your senses, the interior design echoes the tower's feminine curves, majestic and regal from every aspect. Reminiscent of the world's finest hotels, the interiors boast a rich material palette and house-like proportions. Discover your piece of heaven on earth, high above the city's worldly pleasures.

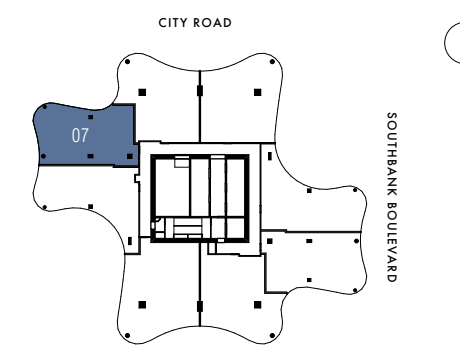


CLOUD 07 — 3 BED 2 BATH





Cloud Residences
Cloud 07
3 Bedroom 2 Bathroom



AREAS	INTERNAL	TOTAL
Level 72-86	125.7 M ²	1353.0 Ft ²

ASPECT VIEW	LEGEND
07 Bay View	F Fridge
	P Pantry
	D Dryer
	WM Washing Machine
	DW Dish Washer

Whilst we endeavour to ensure the contents of these plans are correct at the time of printing, the information they contain is to be used as a guide only. The columns shown on the plans may vary in diameter throughout the Building. All areas are provided in accordance with the Method of Measurement for Residential Property provided by the Property Council of Australia. The plans were completed prior to the completion of final design, engineering and construction of the Building, therefore design, engineering, dimensions, fittings, finishes and specifications are subject to change without notice in accordance with the provisions of the Contract of Sale. Photography may not reflect the actual apartment and to be regarded as indicative only. Please refer to your Contract of Sale.